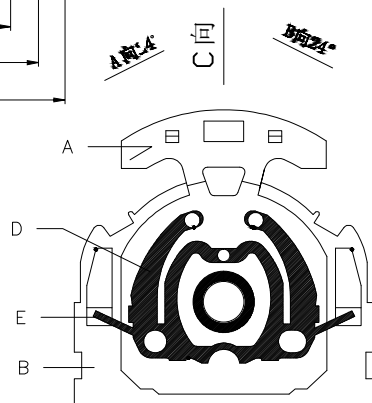
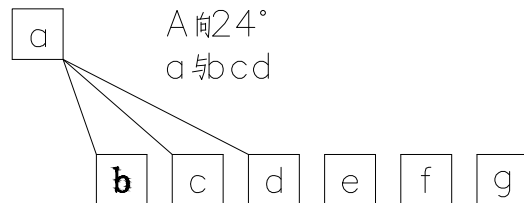
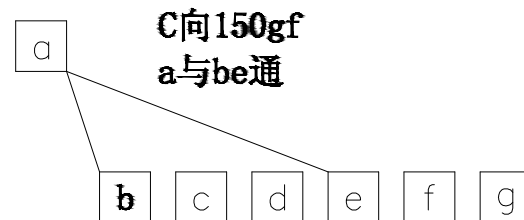
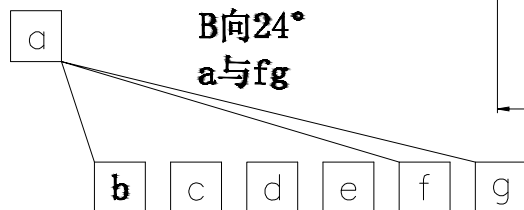
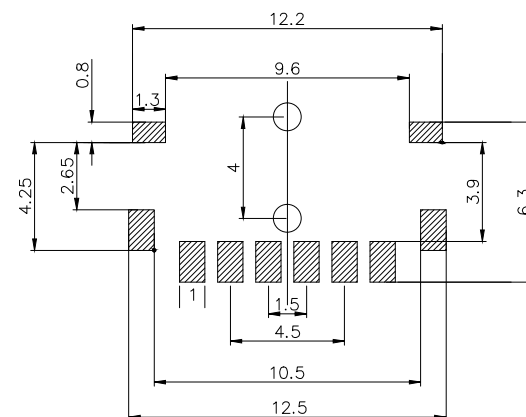
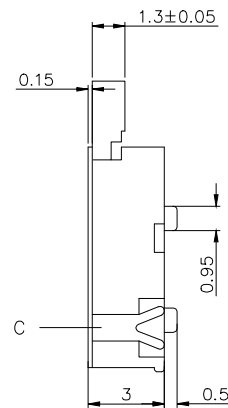
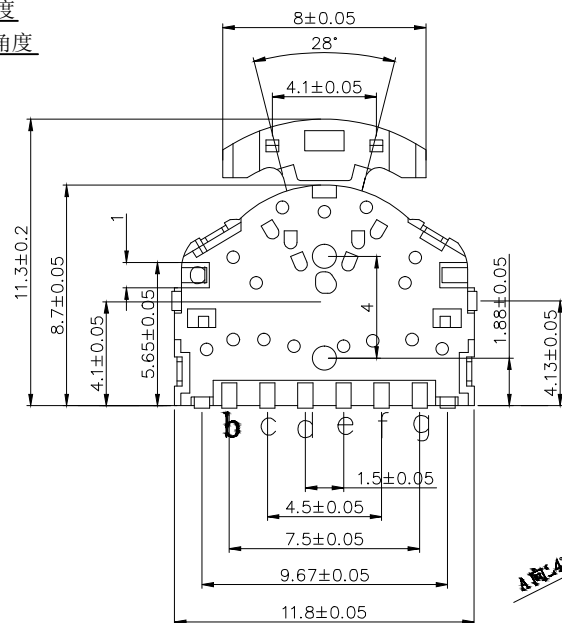
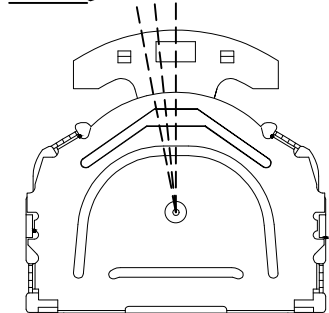


10.8° 总行程角度  
5.8° 导通行程角度  
导通区 5°



项 目		标 准
电气性能	额定电流 Rated Current:	0.1A MAX
	额定电压 Rated voltage:	DC 12V
	接触电阻 Contact resistance:	≤100mΩ
	绝缘电阻 Insulation Resistance:	≥100MΩ
	耐压强度 Compressive strength:	AC110V 50Hz/1 m
机械性能	操作力度 Operating force:	2-100±50gf 200 ± 50gf
	机械寿命 Mechanical life:	10,000 cycles Min
	操作行程 Operation Stroke:	0.85+0.2mm
环境性能	温度范围 Temperature Range:	-30°C ~ +85°C

E	弹簧	1	SUS301	/	银白色	
D	接触簧片	1	复银铜	/	银白色	
C	盖板	1	SUS301	整体清洗	银白色	
B	底座/基座	1	PA46	/	黑色	
A	桃心	1	PA46	/	黑色	
NO.	零件名称 Part Name	QTY	材 料 Material	镀涂 Plating coating	颜色 colour	备注 Remarks